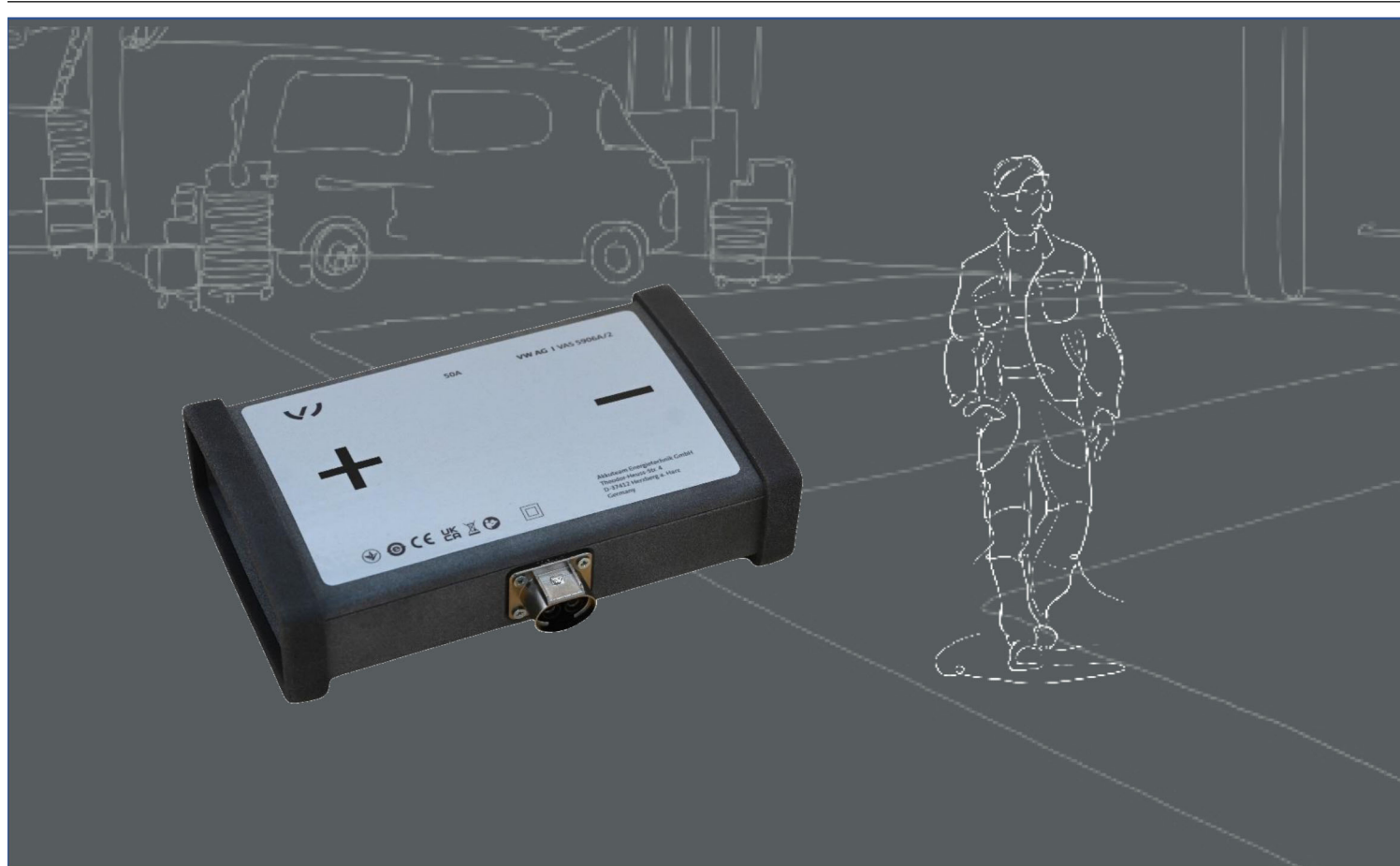


VOLKSWAGEN

AKTIENGESELLSCHAFT



Operating Manual

Adapter plate VAS 5906A/2A



Revision	Date	Reason
V00	03.06.2024	First edition
V01	18.06.2024	Adjustment protective element

imprint

Manufacturer Akkuteam Energietechnik GmbH
Theodor-Heuss-Strasse 4
37412 Herzberg am Harz
Phone: +49 (0) 5521 9981-0
Fax: +49 (0) 5521 9981-11
info@akkuteam.de
www.akkuteam.de

duplication Reproduction or reprint, even in part, always requires the written permission of the manufacturer.

copyright ORIGINAL OPERATING INSTRUCTIONS
All rights reserved.
All texts, images and graphics are subject to copyright and other laws protecting intellectual property.
Copyright 2024 Akkuteam Energietechnik GmbH.

Image sources Warning signs, prohibition, obligation and standard symbols come from public sources such as publicly accessible areas on the Internet. CAD product images and product photos come from the manufacturer. Images showing the product in use are provided with a source reference.

Contents

IMPRINT	2
CONTENTS	3
INTRODUCTION	4
Preliminary remarks	4
Validity of the declaration of conformity	4
Manufacturer information	4
SECURITY	5
Warning levels	5
Important safety instructions	6
Intended Use	7
Requirements for the target group	7
Obligations of the operator	7
PRODUCT DESCRIPTION	8
Scope of delivery	8
Construction	9
Symbols and connections	10
Technical data	11
SERVICE	12
Installation	12
Cleaning	13
Storage and transport	13
Disposal	13
Maintenance	13
HELP	14
Warranty	14
Customer service	14

Preliminary remarks

Please read this manual carefully before using the product.

The product comes with a USB stick on which the operating instructions are stored in various national languages. The currently valid version and other national languages can be found on our homepage.

The operating instructions are an integral part of the product and must be kept together with the product. If the device is sold or transferred, the operating instructions must be handed over to the new operator.

In addition to this operating manual, all relevant operating manuals for the devices to be connected are binding.

Validity of the declaration of conformity

The declaration of conformity issued applies to the product described in the operating instructions. In the event of changes, modifications or extensions, the declaration of conformity and the risk assessment become invalid.

Manufacturer information

Akkuteam Energietechnik GmbH

akkuteam is a specialist provider of battery and backup power technology. We provide grid-independent electrical energy supply in mobile and stationary areas.

We are an owner-managed, medium-sized family business. Our GmbH can now look back on a 25-year company history that has always been characterized by strong growth. With currently over 70 employees, we work at 2 locations in southern Lower Saxony and from there offer a nationwide service, and for the automotive sector even a worldwide service.

Our core competencies are the planning, sales and maintenance of stationary and mobile battery systems as well as energy storage systems, static uninterruptible power supply systems, emergency lighting systems and power generators. Our products cover an electrical power range from a few watts up to several megawatts. We round off our product portfolio with a qualified range of services. With around 25 technical employees and fitters, we handle all assembly, maintenance and repair work required for our product areas.

This safety chapter informs you about the following:

- Warning levels contained in this manual,
- Important safety information about the product,
- Intended use of the product,
- Requirements of the target group.

This manual is only valid for the following product:

Item number: ASE 408 182 00 000

Designation: Adapterplatte VAS 5906A/2

Warning levels

This chapter informs you about the warning levels that you will find in this manual.

DANGER

Failure to follow the safety instructions WILL result in death or serious injury!

WARNING

Failure to observe the safety instructions MAY result in death or serious injury!

CAUTION

Failure to follow the safety instructions MAY result in minor injury!

DANGER

Failure to observe the safety instructions may result in damage to the product!

Important safety instructions

This chapter informs you about the safety instructions that must be observed when handling the product.



WARNING

Incorrect operation can cause serious personal injury and property damage. Do not use the functions described until the following documents have been completely read and understood:

- this manual
- all operating instructions for the system components

CAUTION

Danger of sparking if the charging terminals are removed prematurely. Stop the charging process by pressing the Start/Stop button on the upstream charger.

Intended Use

Use the product only in accordance with these operating instructions, otherwise the protection against electrical hazards provided by the product is no longer guaranteed.

The product is a connecting device with a safety element for connecting external chargers, which are not the charger VAS 5906A, with the adapter cable VAS 5906A/1 to the external starting points of the vehicle.

Vehicle manufacturers within the meaning of this operating manual are exclusively vehicle manufacturers of the Volkswagen Group.

Any other use is prohibited.

Requirements for the target group

Work with the product may only be carried out by qualified personnel!

Obligations of the operator

The operator must ensure that personnel working with the connection line meet the requirements of the target group.

The operator is also responsible for compliance with the following points:

- The adapter plate is always in perfect and defect-free condition.
- The regular inspection intervals for the charging line, if specified by the operator, are observed and recorded.

Scope of delivery

Please check the condition and completeness of the delivery immediately. If there are any defects, please contact the manufacturer immediately.



- (1) Adapterplatte VAS 5906A/2
- (2) USB stick with operating instructions
- (3) Information sheet

Construction

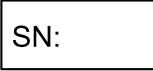
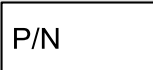




Product structure:



- (1) Connector adapter cable for external starting point VAS 5906A/1
- (2) Positive (+) terminal point for charging clamp (red)
- (3) Negative (-) terminal point for charging clamp (black)
- (4) Car flat fuse 29 mm 50 A (red) according to DIN ISO 8820-3

Symbols and connections

The following symbols are shown on the product:

Symbol	Meaning
	The serial number, together with the manufacturer's part number, is used to identify the product.
	The manufacturer part number, together with the serial number, is used to identify the product.
	The disposal instructions prohibit disposal of the product via household waste. Always dispose of the product in accordance with all current local disposal regulations.
	The CE marking certifies that the product complies with all applicable European regulations and has undergone the prescribed conformity assessment procedure.
	The test seal indicates that the product is approved for use in the vehicle manufacturer's workshops and production facilities.
	Observe the operating instructions!

Technical data

Design data	Values
Manufacturer number	A009233
Maximum rated voltage	17 V/DC
Maximum rated current	50 A
Weight	~ 470g
Dimensions L/H/W	~ 210 mm/130 mm/55 mm

Environmental conditions	Operation	storage	Transport
temperature	5 °C to 40 °C	-20 °C to 60 °C	-20 °C to 60 °C
Altitude above sea level	max. 2000 m	No restriction	
humidity	max. 80% up to 31°C, decreasing linearly to 50% at 40°C	max. 85 %	
	No condensation allowed. Maximum permissible relative humidity 60% if corrosive gas/air is present.		

This chapter informs you about the following activities:

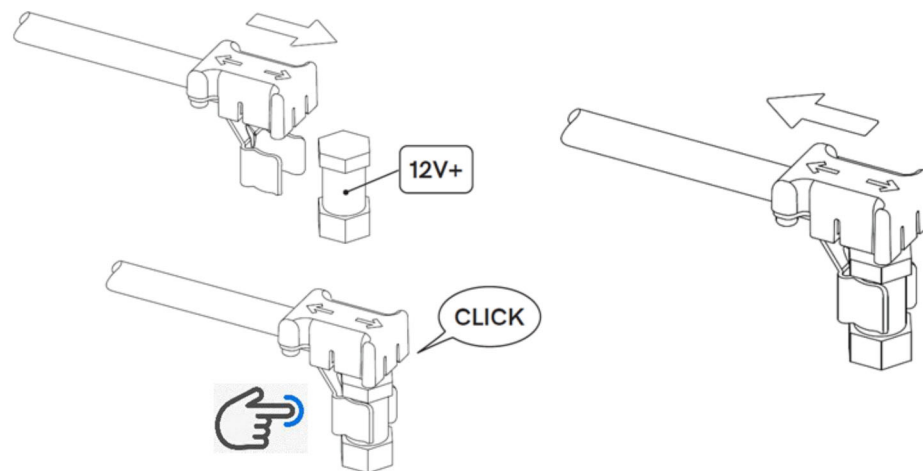
- Installation,
- Cleaning,
- Storage and transport,
- Disposal,
- Maintenance.

Installation

1. Please note the safety instructions.



2. Connect the adapter cable 5906A/1 to the adapter plate VAS 5906A/2.
3. Now connect the red special clamp of the adapter cable to the positive jump start point (+) in the engine compartment of the vehicle. Please check the correct and full-surface contact of the terminal at the external starting points and correct if necessary! A two-handed version is helpful here.



4. The charging clamp must then be connected to the negative jump start point (-) in the engine compartment of the vehicle.
- ✓ Please check that the terminals at the external starting points are correctly and fully connected!
5. Now connect the charging clamps of the charger to the adapter plate with the correct polarity. Please observe the operating instructions for the respective devices.
6. Start the charging process on the charger according to its operating instructions or check whether the charger has started automatically.

7. The adapter plate is equipped with a protective element in the form of a fuse. If the maximum rated current of 50 A is exceeded, the protective element is triggered and must be replaced.
A 29 mm 50 A (red) automotive flat fuse according to DIN ISO 8820-3 must be used here.

Cleaning

Please note the safety instructions!

The product may only be cleaned with a dry cloth.

Storage and transport

When the product is not in use, store it in a dry and dust-free place.

Disposal

Please note the safety instructions!

Always dispose of the product in accordance with all current local disposal regulations.

Maintenance

Please note the safety instructions!

The national and local requirements for regular inspection must be observed!

Check the product for functionality at intervals of no more than 24 months.

For a professional functional test, please contact the manufacturer.

Warranty

The product comes with a warranty period of 24 months.

The warranty applies to a manufacturing defect or a clearly demonstrable defect in the product that is not due to user error.

All inquiries in this regard must be reported to the wholesaler with appropriate photo documentation and a detailed description of the fault.

Customer service

If you have general questions about usage and functionality, please contact the following support:

Akkuteam Energietechnik GmbH

Theodor-Heuss-Strasse 4

37412 Herzberg am Harz

Phone: +49 (0) 5521 9981-0

Fax: +49 (0) 5521 9981-11

vas-service@akkuteam.de

www.akkuteam.de

Volkswagen AG
Group After Sales – Group Service.
Literature and systems
Workshop equipment
PO Box 011/4915
38442 Wolfsburg
For internal use only
Technical changes reserved
As of 06 / 2024

Akkuteam Energietechnik GmbH
Theodor-Heuss-Strasse 4
37412 Herzberg am Harz
Phone: +49 (0) 5521 9981-0
Fax: +49 (0) 5521 9981-11
vas-service@akkuteam.de
www.akkuteam.de
Technical changes reserved
As of 06 / 2024

