

VOLKSWAGEN

AKTIENGESELLSCHAFT



Fully automatic resistance spot welder Manufactured by Car-O-Liner

VAS 6755A

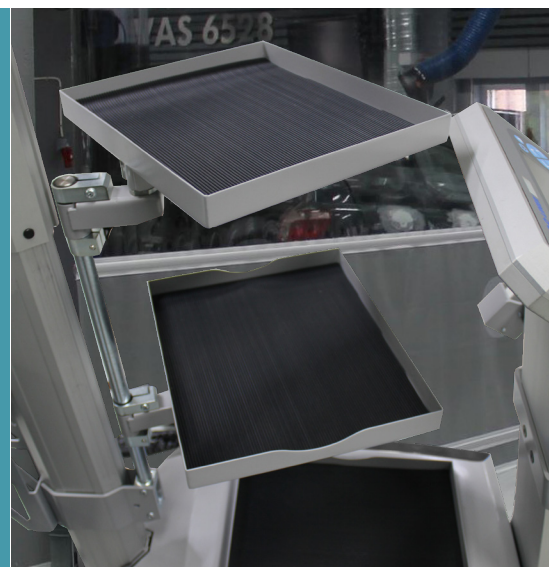


VAS 6755A | Resistance Spot Welder Body Shop Efficiency Taken Seriously



With the best measuring technology available, the VAS6755A is the first spot welder designed to not only make high-quality welds but to also truly get the most out of your body shop.

It instantly measures the metal panels and calculates the exact amount of time, current and clamping force needed for a 100% quality-weld every time.



VAS 6755A | Resistance Spot Welder

Technology for Greater Working Range

The VAS6755A fully automatic resistance spot welder comes with a new, revolutionized light-weight transformer gun. With its 355° swivel handle and “Ergo-grip”, it enables perfect working positions for anyone, for any job. The c-tong is supported by a telescopic arm in a durable and lightweight extruded aluminum that can be easily adjusted both vertically and horizontally.

A compact power unit with a low center of gravity gives mobility and stability, a 16,000-amp transformer and CANBUS communication ensure a perfect weld every time.

VAS6755A instantly measures the metal panels and calculates the exact amount of time, current and clamping force needed for a 100% quality weld.



TELESCOPIC SUPPORT ARM

The support arm is designed to ensure maximum freedom of movement (from 1.9 to 2.4m). It's made of robust yet lightweight extruded aluminum, and is easy to adjust both vertically and horizontally for an optimum working position.

HOOKS

Four hooks, two for vertical, two for horizontal placement, keep your hose in place and safely out of the way. Slide the clips along the track in the balancer arm, open the clips and insert the hose.

SHELVES

The three shelves provide a great space to place consumables and equipment. The rubber mats and high sides keep items securely in place. The shelves swing from side to side giving ease of access. Height adjustable to achieve optimal working conditions.

EXCLUSIVE LED CONTROL PANEL WITH 7" DISPLAY

The control unit is easy and intuitive to use. Equipped with VW-approved software, it automatically establishes required settings to ensure the proper weld nugget giving fast paced accuracy with every welding spot. Full-color display.

DOUBLE ROTATION C-TONG HANDLE

The fully-closed handle with Ergo-Grip enhances maneuverability and increases productivity while allowing the technician to hold the gun in a relaxed manner in every working position. Day in, day out.

LIGHTWEIGHT TRANSFORMER GUN

Made of reinforced fiberglass the transformer gun is designed for fast-paced activity, while reducing body strain. It's robust, yet among the lightest on the market, allowing technicians to work efficiently without tiring. Again and again.

ROBUST AND COMPACT POWER UNIT

Providing welding currents up to 16,000A the power unit, with its solid, high strength steel bottom plate, features a low center of gravity for superior stability and increased mobility. With the 6m cable more parts/areas of the vehicle can be reached without moving the machine.

UNIQUE DOUBLE ROTATING HANDLE GIVES SUPERIOR HANDLING

VERTICAL UP POSITION



VERTICAL DOWN POSITION



HIGH HORIZONTAL POSITION



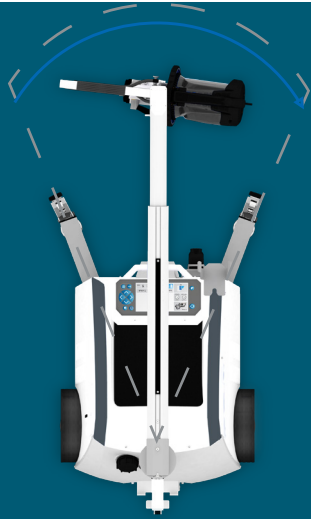
MIDDLE HORIZONTAL POSITION



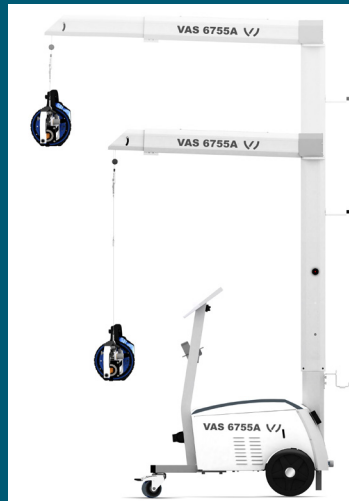
LOW HORIZONTAL POSITION



REACH THE OUT-OF-REACH WITH FULL FREEDOM TO PERFORM



Reachable arm area
Maximum arm reach
Minimum arm reach
Highest height
Lowest height



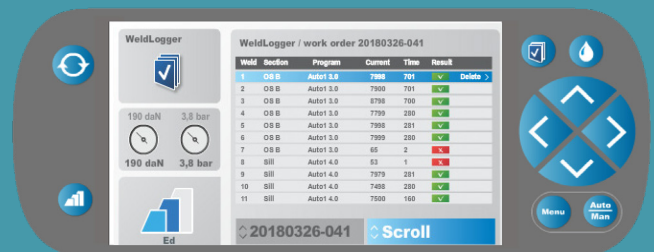
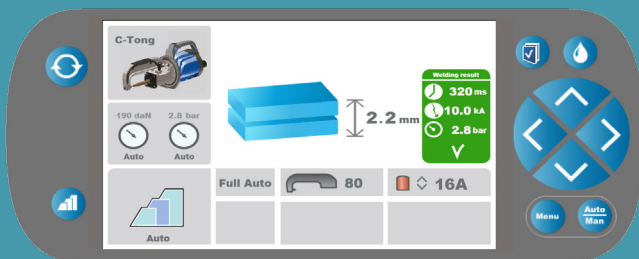
40°
1,5M (59.1 in)
1,2M (47.2 in)
2,4M (94.5 in)
1,9M (74.8 in)



The handle swivels 355° on two axes. Just press the quick-release button and turn the handle to an optimal working position for superior handling.

FOUR WELDING MODELS

WELD DATA DOCUMENTATION



VAS6755A COMES EQUIPPED WITH VOLKSWAGEN SOFTWARE THAT SUPPORTS THE 16A CAP.

THE VAS 6755A RECORDS WELD DATA AND GENERATES REPORTS DURING THE REPAIR PROCESS.

FULLY AUTOMATIC	AUTO 1	AUTO 2	MANUAL
Default mode. All values are automatically set.	Semi automatic mode. Most of the values are automatically set. Except: Total material thickness	Semi automatic mode. Some values are automatically set. Except: Number of metal sheets Type of material Total material thickness	Welding time, current and electrode mode are settings that should be set manually.

WELDLOGGER MACHINE SOFTWARE provides for documentation and registration of welding data: welding current, time, date, program. The results may be transferred from the machine to a thumb drive. Install the optional WeldLogger PC Software onto your computer and via thumb drive transfer information from VAS 6755A to the PC. Create work orders or print a report to testify to the quality of the welding and increase the trust in your body shop.

VAS 6755A INCLUDES THE FOLLOWING:

- C-Yoke, 4 pcs
- Electrode Set inc. case
- Support arm with balancer block
- Shelf and Clip Kit
- Dust Cover
- 16A VW Cap



C-YOKE 40MM



C-YOKE 80MM



C-YOKE 350MM



C-YOKE 500MM



ELECTRODE KIT



DUST COVER



BALANCER ARM | SHELF AND CLIP KIT

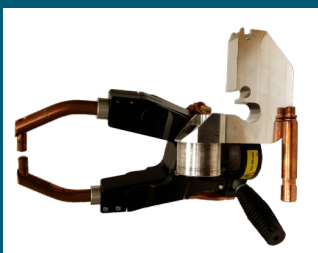


Shelf kit includes 3 shelves, 2 rotatable and 1 fixed, with rubber mats. The Clip kit includes 4 clips, 2 for verticle and 2 for horizontal attachment.

OPTIONAL ACCESSORIES

A-TONG + ADAPTER 6755A/1

ART. N° 49803
ASE 437 1078 0000



Patented accessory for the C-tong to increase accessibility.

CAP DRESSER 6755A/2

ART. N° 44704
ASE 437 1088 0000



Cleaner for electrode cap 16A

WELDLOGGER PC SOFTWARE

ART. N° 36590



COMPLETE SET SPOTTER/DENT FIXER

ART. N° 41888



Consisting of: multifunction spot welding gun for dent repairs, pulling, shrinking and push-spotting, including pulling hammer, workpiece cable with connector, 2,500 mm ground cable & accessories box.

Product Information and Technical Data

SPECIFICATION	208V ART. NO. 50043 ASE 437 1068 1023 230V ART. NO. 50045 ASE 437 1068 1036	400V ART. NO. 50047 ASE 437 1068 1000	460V ART. NO. 50049 ASE 437 1068 1923
Max. voltage	3 x 208V -5% +10%, 50 Hz-60 Hz	3 x 400V -5% +10%, 50 Hz-60 Hz	3 x 460V -5% +10%, 50 Hz-60Hz
Power sup	60A slow blow or circuit breaker Type K	32A slow blow or circuit breaker Type D	30A slow blow or circuit breaker Type K
Protection type	IP21	IP21	IP21
Insulation class	F	F	F
Cooling type	Liquid cooled	Liquid cooled	Liquid cooled
Compressed air supply, p1min-p1max	5.0-10 bar (72-145 psi)	5.0-10 bar (72-145 psi)	5.0-10 bar (72-145 psi)
Duty factor, X	10%	10%	10%
Max. short circuit in	317A	136 A	109 A
Permanent power (100 % duty factor), Sp	116 kVA	130 kVA	128 kVA
Permanent input current, ILp	324 A	190 A	161 A
Electrode force, Fmin-Fmax	350-640 daN (787-1439 lbf)	350-640 daN (787-1439 lbf)	350-640 daN (787-1439 lbf)
Dimensions (HxWxD) approx. (without support arm)	1130 x 650 x 930 mm (44.5 x 25.5 x 36.5 in)	1130 x 650 x 930 mm (44.5 x 25.5 x 36.5 in)	1130 x 650 x 930 mm (44.5 x 25.5 x 36.5 in)
Weight approx. (arm + water + 80mm Yoke)	135 kg (298 lbs)	135 kg (298 lbs)	135 kg (298 lbs)
WELDING OUTPUT			
Max. short circuit output current, I2cc	16.0 kA	16.0 kA	16.0 kA
Permanent output current (100 % duty factor), I2p	14.1 kA	15.8 kA	15.8 kA
No-load voltage, U2d	12.0 V	13.0 V	14.5 V
LIQUID COOLING			
Cooling power	1000W	1000W	1000W
Tank capacity	20 l (5.3 gal)	20 l (5.3 gal)	20 l (5.3 gal)
Rated cooling liquid flow, Q	3 l/min (0.79 gal/min)	3 l/min (0.79 gal/min)	3 l/min (0.79 gal/min)

Contact

SWEDEN

Car-O-Liner Group AB
Hulda Melgrens gata 1
se-421 32 Vaestra Frölunda
+46 31 721 1050
info@car-o-liner.se

GERMANY

Car-O-Liner GmbH
Hinter der Altdörfer Kirche 18
D-64832 Babenhausen
+49 (0) 6073 74487-0
info.germany@car-o-liner.se

ITALY

Car-O-Liner Italy
Via Provinciale Carpi, 33
42015 – Correggio (RE)
Tel. +39 0522 733411
info.carolineritalia@car-o-liner.se

NORWAY

Car-O-Liner AS
Sørlandske hovedvei 313
3270 Larvik
+47 90219500
info@car-o-liner.no

UNITED KINGDOM

Car-O-Liner (UK) LTD
Great Central Way
Butlers Leap
Rugby, CV21 3XH
+44 1788 574 157
info@car-o-liner.co.uk

For Global Contacts please see www.car-o-liner.com/distributors

Volkswagen Aktiengesellschaft
K-GVO-LW
Group After Sales – Group Service, Literature and Systems
Workshop Equipment
Letter Box 011/4915
38442 Wolfsburg